

The Livingstone biWeekly



28 October 2015

Dear All

My header is the sun rising over Busanga Plain, Kafue National Park. More of the story later ...

No land sales in Livingstone Zambia Weekly

The Livingstone City Council has suspended all its land transactions until the Anti-Corruption Commission (ACC) has completed investigations into former Livingstone Mayor Milford Maambo (UPND) allegedly allocating himself several plots illegally.

Bus Terminus

As I stated in the last newsletter, the bus terminus and central market are to be completed. According to the news this week, they will be operational by April. I haven't seen any movement on either project recently ... so, hopefully this news is correct and not just 'political speak'. The present bus terminus in front of the North Western Hotel is an eye-sore and the problem of market stalls all over town is a result of no proper market. I do, however, have concerns over the new market which is 3 storeys high and I cannot see how it is going to work – cleanliness is going to be a serious issue so I hope authorities have ideas on how to keep it clean.

Batoka Sky
VICTORIA FALLS, ZAMBIA
MICROLIGHTS & HELICOPTERS

FEEL THE FREEDOM OF THE AFRICAN SKY
and experience the power of the Falls up close and personal...

Unique, uninhabited and literally breathtaking views
from our MICROLIGHTS & HELICOPTERS

MEMBER OF THE
Livingstone's Adventure
GROUP

www.livingstonesadventure.com



AFRICAN QUEEN
CRUISE COMPANY



Bhukhans

JOLLYBOYS



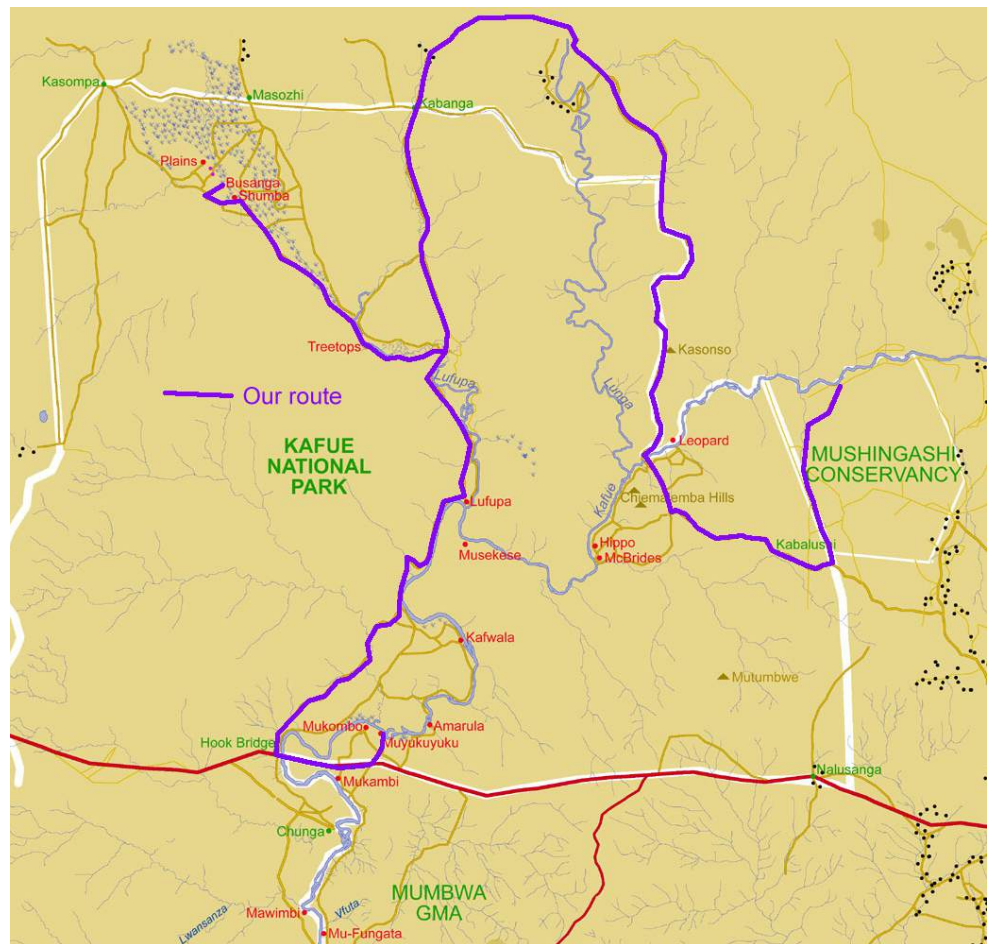
Bundy
ADVENTURES

Busanga Plains and Mayukuyuku

We left Mushingashi early; we had a journey which was not long but tortuous (the purple line on the map). In fact, as the crow flies, it was a distance of 100km, but we couldn't fly. We had to drive along dirt roads for over 280km with two pontoons, one over the Kafue River and one over the Lunga River.

The pontoon over the Kafue River was about an hour away on the Mumbwa-Kasempa road. Then the road skirts the border of the Kafue National Park within Lunga Luswishi Game Management Area. A pretty drive but we saw no wildlife.

The next pontoon was over the Lunga River and then we were into villages. I had the coordinates for the turning to Kabanga Gate in the GPS but I think we were chatting and missed it. We returned to find that there was a sign to the park but it was only visible when travelling from the north. *Oh, my dear, when are we going to put good signs on our roads??!!* They are so necessary for tourism ... and should not cost too much.



Pontoon over the Kafue River



Road block on the Kabanga Road

We took the narrow sandy track towards Kabanga entrance. There we underwent the frustrating experience of paying park fees. In fact, our parks officer struggled to calculate it on his cellphone and got it wrong. I put Venice onto the task of working it out. We then had to wait until the receipt was re-written.



According to this sign at Kabanga the speed limit is 20mph



Puku in the termitaria

Off we went again south towards the junction to Busanga Plains. This road runs along the Ntwema River which is dry but had left waterholes along its length. We didn't see much wildlife. The bridge over the Ntemwa needed some repair when we got there – Venice adjusted the timbers.



Fixing the bridge over the Ntemwa



Moshi Sign

We passed Moshi. This used to be a Government Camp but is now abandoned and derelict. If I remember correctly, Kafue used to have 7 Government Camps where we had reasonably-priced accommodation and camping facilities, like the ones in Zimbabwe and Namibia. They have all gone now. Government continues to expect private operators to provide affordable accommodation for tourism but it is not economic for a private enterprise with the lease fees, etc, charged by ZAWA.

The northern section of Kafue National Park has only luxury accommodation available which is beyond the pocket of most of us. Busanga Wilderness Camp, where we were heading, only operates for 5 months of the year. The camp is taken down at the end of their operating period and then rebuilt after the rains. You do the sums and work out how they could possibly offer mid-market, let alone budget, accommodation ... Absolutely impossible. The government should work with private operators to come up with a plan so that we can have affordable accommodation in the north. (Wilderness did continue to operate the campsite at Lufupa but gave up after a year or so.) The nearest facilities to Busanga which are budget are at Kafwala; here there is a Wildlife Society facility and a camp belonging to Busanga Trails but I can't find out much about them. Anyone got contact information? Otherwise the other accommodation is at Mukambi and Mayukuyuku near the Hook Bridge. It is possible to do a drive to Busanga from Mukambi or Mayukuyuku and return the same day but it would be a bit of a rush.

We found the turning to Busanga easily – privately marked to Tree Tops, the school facility. The road went through woodland along the seasonal Lufupa River with lots of large waterholes with hippos being hippos. The Lufupa is responsible for the Busanga floodplain which covers a large area of northern Kafue National Park during the rains.

We were attacked by tsetse fly so covered our skin and clothes in dettol solution and 'doomed' the car. But, once in the plain, the tsetse disappeared.



West to Busanga



Traditional fishing on the Lufupa ... my pet hate ...

TONGABEZI



my **SPAR** Giving me more choice every day!



We did see a couple of elephants but I didn't stop to stare ... Kafue elephants are not friendly. I have read stories that they have never been friendly in Kafue NP, but I feel sure that it is the latest poaching crisis is not helping.



Busanga Bush Camp



Luxury in a canvas room at Busanga Bush Camp



Our 'pad' overlooking the plain

We found some Wilderness guides near their runway and they put us on the right road to Busanga Bush Camp. We could see the camp in the distance nestled into a tree island overlooking the remnants of the Lufupa River.

We were warmly welcomed by Ondyne and Newton, our hosts for the two days.

The days at a Wilderness Camp start off with an early morning call – usually around 5-5.30am – then coffee and a light breakfast of fruit, yoghurt and muffins. And then we all climb into a safari vehicle for a tour of the plain, returning for brunch. The midday hours are lazy times chatting, watching the view or even the odd siesta. Then, it is afternoon tea with delicious cakes after which we all climb into the safari vehicle again for another tour.



One of the two cheetah brothers

Newton, our guide, knows the area well. In fact he knew exactly where to find two cheetahs which were lazing in the shade of a tree not far from camp. One of the cheetahs is collared and is part of the Zambia Carnivore Programme which is monitoring predators in the park.



Time for sleep and we were disturbing them ...





A lone roan



A lone roan bottom

We found lechwe, puku, wildebeest, buffalo, impala, side-striped jackal, roan, warthog, hippo, elephant (Newton got much closer than I would dare), oribi, and lion. Excellent wildlife viewing.

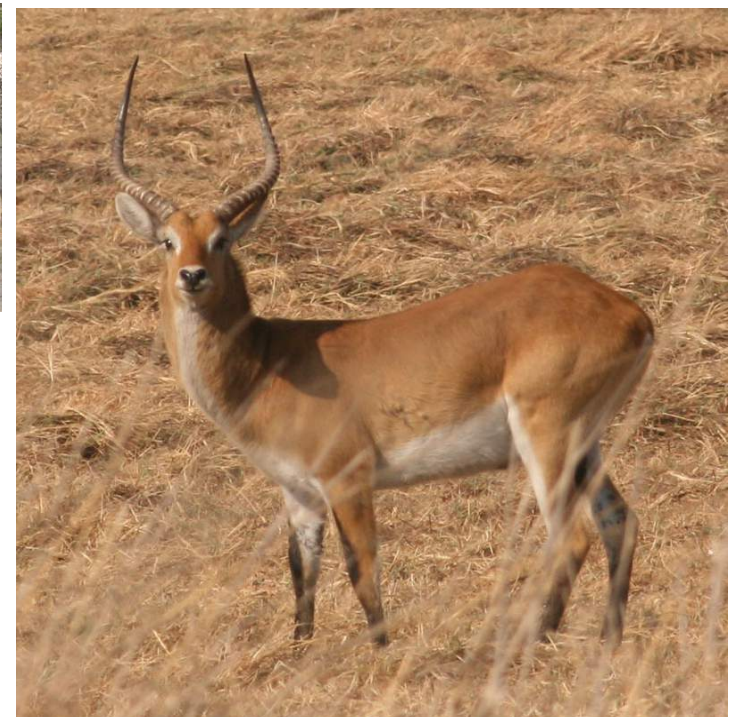


Busanga elephant ... very nervous ...



Loo with a view

As with all camps in the park, none of them are fenced and are very open. The 'loo with a view' at the camp is open in front for visitors to enjoy the scene of the lechwe and puku grazing on the plain. On our first night I went to visit the loo. It was completely black outside and I heard rustling in the long grass nearby. Oooo ... All I could see from the light of the loo was the tall grass either side of footpath onto the plain. I didn't hang about in the loo, returning to the main area. We stood and watched, peering into the dark. The elephants had come to visit and, although we didn't see them in the pitch blackness of the night, we heard them breaking the branches of the trees; we could also hear their tummy rumbles as they passed very near.



Red lechwe



One thing which really impressed me on the Plain was that it had not been completely burned. You know how we love to burn our bush every year and destroy, not only the grass, but all the little things which live there. The Plain had been burned, but in sections. However, there were large areas where the grass remained untouched, drying in the heat and then flopping down onto the ground to feed the soil as nature intended. Well done, whoever is responsible for this sectional burning.

On the morning we were to leave we were invited to go for a balloon ride. Climbing the vehicle very early we headed towards the balloon launch pad. We watched as the balloon was inflated, got into the basket and the wind started to blow. We had to abandon our ride ... so sad. Visitors to the Wilderness Camps in Busanga are given a free balloon ride if they stay for 3 days or more. Very exciting. Shame we missed it.



Busanga lion



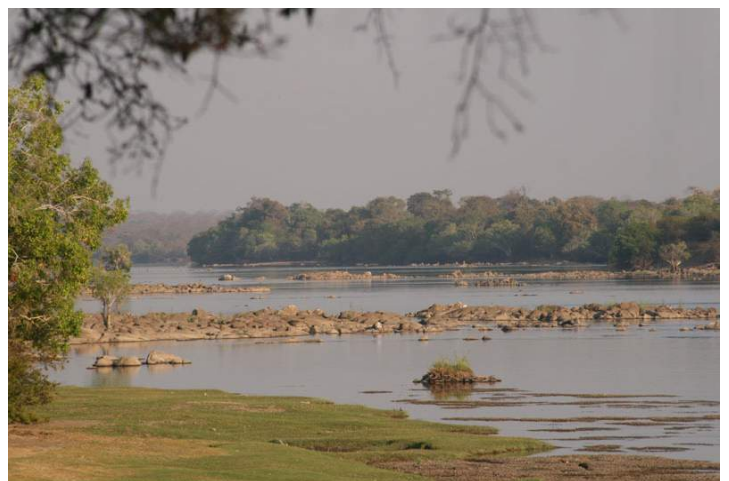
Balloon being inflated ... then the wind arrived ...



One Fig - a Busanga Plain landmark

Mayukuyuku

From Busanga we were on our way to Mayukuyuku. We buzzed through the park and reached the Hook Bridge entrance to the park in good time. We popped in to Mukambi to say hello and get a cool drink and then headed to Muyukuyuku not far away on the Kafue River.





This was my first trip to Mayukuyuku and to meet Pippa and Patrick.

We didn't have time to do a tour of the area but I enjoyed this beautiful spot on the river. The river is full of rocks and has lots of character. Hyrax were scampering around the bank among the boulders. We heard lion on the other side of the river. Hippos entertained by gaffawing and coming out on to the bank to feed. The birds, of course, were excellent.



I was sad not to stay longer at Mayukuyuku but we had planned to get back to Livingstone the following day. Pippa tells me that the river is very special when it is high so I am planning another trip ... soon ... when I can tell you more ...

Mayukuyuku has chalets and camping.

As a bit of added information, for the drive from Kafue to Livingstone, there is a short cut to bypass Lusaka. Absolutely essential to do the journey in one day ... in daylight hours, that is.

As you come towards Lusaka there is a major road block (I am sure it is always there). Just after that is a turning right. Go down that road for about 10-11 km and take a left. This road takes you along the Makeni Road to the Kafue Road.

If you are coming from the other direction, the Makeni Road is left at the first traffic lights as you are entering the outskirts of Lusaka.



From the Zambia Weekly

Government threatens to close Radio Phoenix

Government is investigating whether Radio Phoenix has links to the opposition UPND party.

"We have noted that Radio Phoenix is pro-opposition and anti-government," said Minister of Information and Broadcasting Services Chishimba Kambwili, threatening to revoke the radio station's license. He denied having influenced the firing of Phoenix presenter Christine Ngwisha after she recently hosted him on the 'Let the People Talk' show. On air, Kambwili accused the radio station of preventing him from explaining government's position on national issues, arguing that the programme was manipulated to serve the UPND.

Zambia Airways is back!

Having threatened to do so for years, government has finally revived Zambia Airways.

The new national airline, Zambia Airways 2014 Limited, is scheduled to be fully operational by the end of next year, according to Chief Government Spokesman Chishimba Kambwili. Government is currently negotiating with suppliers of aircraft. Government allocated K498.4 million in the 2016 national budget to the expansion of the Kenneth Kaunda International Airport in Lusaka and the establishment of a national airline.

Most experts have pointed out that it is unviable to operate a national airline in Zambia, unless in a private partnership, which has been acknowledged by the PF government on several occasions, when it has announced that it was negotiating with unnamed private partners.

However, according to the Times of Zambia, which did a search at the Patents and Companies Registration Agency, the three registered directors of Zambia Airways 2014 Limited are Secretary to the Treasury Fredson Yamba, Works and Supply Permanent Secretary Charles Sipanje and Finance Permanent Secretary Pamela Kabamba.

A second coal-fired power plant

Construction of Zambia's second 600 MW coal-fired power plant in Sinazongwe is expected to commence within two months. The \$690 million plant, to be constructed by EMCO Energy Zambia Limited in two 300 MW phases, is reportedly awaiting the finalisation of power purchasing-related agreements with ZESCO, although the two parties actually signed a power purchase agreement in September 2014. Government signed the original implementation agreement with EMCO back in September 2012. EMCO will develop a coalmine as well. EMCO Energy Zambia is a subsidiary of EMCO Resources Limited of Canada.

Zambia already has an operational coal-fired power plant at Maamba Collieries in Sinazongwe, but it is yet to be connected to the electricity grid. This plant has an output of 300 MW, but is scheduled for expansion to 600 MW. Maamba is majority owned by Nava Bharat (Singapore) Pte Ltd.

Zambian art only!

All government agencies, nationally and abroad, must now decorate their offices with Zambian art following a directive from Cabinet, backed by President Lungu. The move is meant to support, promote and empower Zambian artists. The directive also includes public places and hotels.

Zambia Weekly and The Bulletin and Record

I often reprint stories which are in the Zambia Weekly. This email publication is an excellent news summary of the week's events in Zambia. There is a lot of politics but there are also other things which are relevant to our business lives in Zambia.

The other publication which is definitely worth reading is the Bulletin and Record. It is a monthly magazine which is available in Shoprite.

Here is what the Bulletin and Record had to comment on the plans by government to start a national airline:

Zambia is not ready now or in the foreseeable future to own a national airline. It's a quick way to send a country into bankruptcy and I was hoping that by now some aviation expert would have warned us against such wishful thinking. Those who have been calling for a national carrier mean well and do so in the spirit of nationalism, but running an airline goes beyond the sentimental rhetoric of flying the national flag. ...

Electricity Regulation Board – New tariffs

The public is requested to give submissions to the ERB about the proposed new electricity tariffs by 31 October. Few people ever take up this chance to air their views.

These are some of the facts which can be downloaded from <http://www.erb.org.zm/press/statements/ZescoTariffApplication2015.pdf>

Residential (monthly)

The first 500kWh will be charged at K0.15 (At present it is K0.15 up to 100kWh, then K0.51 to 300kWh, and ... *Their information is a bit confusing ... can't work it out ...*

Fixed charge K54.88 (It was K18.23)

Commercial (monthly)

Per kWh will be K0.88 from K0.31

Fixed charge will be K156.47 from K55.09

Bangweulu Wetlands Project

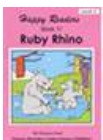
Some photos of the chicks on the six different nests that we are monitoring under our Shoebill Guard programme. This year is not as good as last, where we had 11 chicks from nine nests. This year there are no 'twins', and so only six chicks that we know of have reached fledgling age. This highlights the vulnerability of the species and the



importance of our conservation efforts, because without proper protection even a few chicks stolen from so few nests would impact on the population. All photographs by Elijah Mofya, our Community Development Facilitator who does a great effort to visit these nests. Many nests are a full day's march through very tough swampy terrain.

South Luangwa Conservation Society

Helping a snared buffalo



Happy Readers

A Reading Programme developed in Africa for children of Africa



NELS MOTORS
Vehicle
Workshop



Leopard Lodge, Kafue National Park

... The lodge grounds are full of lion or leopard tracks every morning and their roars and growls can also be heard at night. A lot of the time they just move through unnoticed, but we have been lucky to see some of them, especially when the moon is bright.

At about 1 in the morning one night we could clearly see a lioness and cubs walking up past the chalets towards the dining area, before disappearing out of sight.

One morning we found drag marks just outside our reception. On closer inspection we could see that a leopard had killed something and had dragged it away. Not too much further we found a dead Puku. We hid away and soon the leopard was back and with amazing effort it pulled the carcass up a tree. Vultures were all over the place and the leopard had quite a job fighting them off.

...
We have had many sightings of both these big cats on game drives as well, and on one occasion we came across a pride of 10 lions feeding off a warthog carcass. This was bettered a week later when we had 11 lions (1 Male lion, 6 Lionesses and 4 cubs) walking past the lodge on the other side of the Kafue River. ...



Wildfoto

Stephen Robinson has some new photographs on his website:
<http://www.wildfotoafrica.com>

Here is one from Liuwa Plain.



Conservation Lower Zambezi

Talk about independent women. These women not only have to deal with the harsh dry heat of October, the bugs and mosquitos of the wet season which bring with unwanted diseases or the constant threat of elephants stopping in their path or raiding their crops, but they also have to cope with earning an income within these conditions. These women are propelling forward with some great enthusiasm and initiative. They are experimenting with tailoring and new bead designs, which we believe show great promise to slowly transform these ladies small hobbies into small enterprises. The Wakasimba ladies (meaning strong women) continue to sell and breed their broiler chickens and have since purchased 30 more chickens/hens, which are laying eggs sold to the community. We would like to continue working hand in hand with these ladies and encouraging them to continue developing and expanding into independent power houses of Chiawa and beyond.



ZAWA Special Anti-Poaching Unit (SAPU)

The Special Anti-Poaching Unit (SAPU) is an initiative of ZAWA and GRI with support from the Civil Society Environment Fund and the David Shepherd Wildlife Foundation.

The Unit was formed in January of 2013 at Chunga Training Camp in the Kafue National Park and is staffed by 22 ZAWA Wildlife Police Officers with GRI logistical and technical staff providing support.



ZIMBABWE

Bulawayo Water Project again being discussed

According to an article in The Chronicle, Malaysians have shown interest in funding the pipeline between the Zambezi River and Bulawayo. They had originally offered to fund the project 10 years ago but that was when the Zim dollar was going into freefall so their offer was withdrawn. The project, it would appear, would be built on a Build, Own, Operate and Transfer scheme.

Zimbabwe Roads

In the news has been the government plans to make the Bulawayo to Victoria Falls road into a dual carriageway. Also mentioned for dual carriageways are the Beitbridge-Masvingo-Harare Road and the Harare-Chirundu Road. The Zimbabwe government is expecting China to help fund these developments as well as assistance in the railway network.

But ... not only do we have toll gates on all major roads in Zim which were supposed to pay for road improvements but now ...

Border Tax being considered

According to an article in the Chronicle, government is considering a new tax at borders to help pay for road improvements. It does not state what the new tax will be. There are already road access fees payable by non-Zim vehicles at each border.

Urgent Appeal Friends of Hwange

It is hot, dry and it's desperate! As you all relax and prepare to enjoy your weekend, we urge you to think about the wildlife in Hwange and how much life depends on water.

It's crisis time in Hwange, we are pumping all the pans 24/7 and using 2000 litres of diesel a week. We cannot stop until it rains. If the animals don't drink, they die. We have had support from people abroad, and from a few people locally, and for that we are hugely grateful, but we need more local support. Come on Zimbabwe, it's your National Park, if you have an extra \$5, \$10, or \$20, donate it to Friends of Hwange so we can provide water for ALL the wildlife in Hwange National Park.

Contact Dave Dell - dave@friendsofhwange.com
Visit our website - www.friendsofhwange.com/donate
Follow us on facebook - <https://www.facebook.com/FriendsOfHwange>

We need your help now.

BOTSWANA

The Vincent Crosbie Committee and the village of Kasane present:

Oktoberfest

VENUE: CHOBE FARMS
DATE: 31ST OCTOBER 2015

Celebrating Oktoberfest in Munich is a cherished memory for many, but you're mistaken if you think you need to head to Germany to partake in this annual beer-soaked festival. Get ready for a Saturday of rugby, beer, bratwurst sausage, sauerkraut and potato salad! At the Kasane Oktoberfest you'll find live music, dancing and plenty of lager so put on your dirndls and lederhosen and head to Chobe Farms on the 31st of October 2015. Festival gates open at 4 p.m.

TICKETS ARE P200.00 EACH AND INCLUDE:
A MEAL CONSISTING OF BRATWURST, SAUERKRAUT AND POTATO SALAD
ALSO ON SALE: CRISPY FRIED CHICKEN AND HOMEMADE GERMAN PRETZELS

A CAR SERVICE WILL BE AVAILABLE FOR THOSE WHO PLAN TO OVER INDULGE. SHOULD YOU MAKE USE OF THIS IT IS AT YOUR OWN COST, CALL JOE +267 74654424

THE FIRST 200 TICKETS SOLD WILL RECEIVE A FREE VINCENT TO DAKAR BEER GLASS.

LIMITED TICKETS AND AVAILABLE. TICKET SALES CLOSE ON THE 23RD OCTOBER 2015. OUTRANCES WILL BE PERMITTED TO TICKET HOLDERS ONLY.

FOR TICKETS CONTACT

| | |
|--------------------------|--------------------------|
| KASANE: | MADIB: |
| Shevaun Schroder 6250620 | Brett Sinclair 6860568 |
| PANDAMATENGA: | GABORONE: |
| Diane French 74533416 | Vincent Crosbie 75983523 |
| FRANCISTOWN: | GABORONE: |
| Danny Riggs 71425383 | Amy Crosbie 72119613 |

Under The Botswana Sky

BENJU Electrical Services Ekurumedi
Gaborone, Botswana. Contact No.



Hai//om sue for rights over Etosha

Namibian

MEMBERS of the Hai//om San community have launched a potentially ground-breaking court case through which they are trying to have their ancestral rights over Etosha National Park and the Mangetti area recognised and enforced.

In the first case of its kind in Namibian legal history, eight members of the Hai//om community, represented by the Legal Assistance Centre, are asking the High Court to allow them to bring a class action lawsuit on behalf of their ethnic group against Namibia's government and other parties with interests in Etosha National Park and the Mangetti West area north of Tsumeb.

If they succeed with their application to be allowed to pursue a class action against the government and the other envisaged parties, which is the first legal hurdle in their path, the eight applicants plan to lodge a case in which they will be asking the High Court to confirm the Hai//om people's ownership of the land comprising Etosha National Park and the Mangetti West area. In the alternative they will be asking the court to confirm that they have the right to occupy and use the Etosha and Mangetti West areas, or that they are entitled to financial compensation or being awarded equivalent areas of land. ...

Namibian Environment and Wildlife Society (NEWS)

Shared this photograph by Sergey Gorshov



WEATHER

| Min Temp | Max Temp |
|----------|----------|
| 23°C | 38°C |

EXCHANGE RATES

| | |
|-------|------------|
| US\$1 | K12.10 |
| | P10.46 |
| | Nam\$13.65 |

A SMILE



From The Guardian, UK

Teams of energy-efficiency enthusiasts are racing homespun solar-powered vehicles over 3,000km from Darwin to Adelaide. Each car is allowed a maximum of 6 sq m of solar panels as well as a nominal 5kW hours of stored energy; all other energy must come either from the sun or from the kinetic energy of the vehicle. The challenge, first run in 1987, goes from 18-25 October

Have a good two weeks

Gill